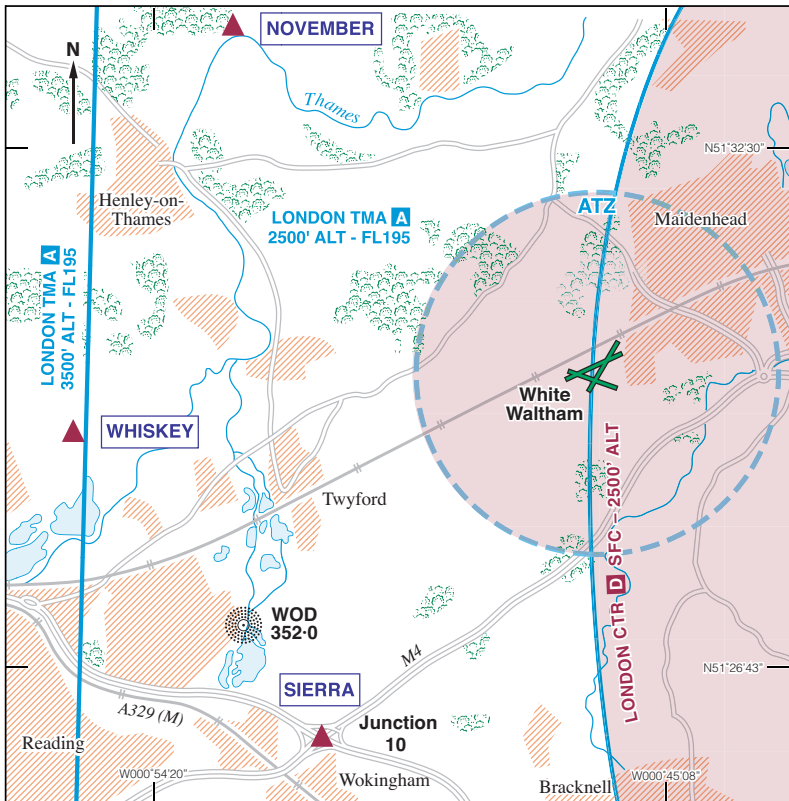


WHITE WALTHAM AREA CHART



White Waltham Local Flying Area (LFA) is defined as that portion of the ATZ contained within the London CTR. Flights within the LFA may take place without compliance with IFR requirements subject to the following conditions:

1. Aircraft to remain below cloud and in sight of the ground.
2. Maximum altitudes: 1500 ft QNH, provided that aircraft can remain at least 500 ft below cloud; otherwise 1000 ft QNH.
3. Minimum flight visibility 3 km.

Note. Pilots of aircraft flying in the local flying area are responsible for providing their own separation from other traffic operating in the relevant airspace.

Inbound aircraft are to report their position and altitude in relation to one of the following Reporting Points:

- From North — **NOVEMBER** – bend in river north of HENLEY.
- From West — **WHISKEY** – North of lakes East of READING.
- From South — **SIERRA** – Motorway junction north of WOKINGHAM (Junction 10 M4).